



# Valuation System Conversions

Chicago Actuarial Association  
March 2010 Workshop

John Heins, FSA, MAAA

March 9, 2010



**POLYSYSTEMS, INC.**  
DEDICATED TO WORLDWIDE SOLUTIONS.

# Valuation System Conversion – Process

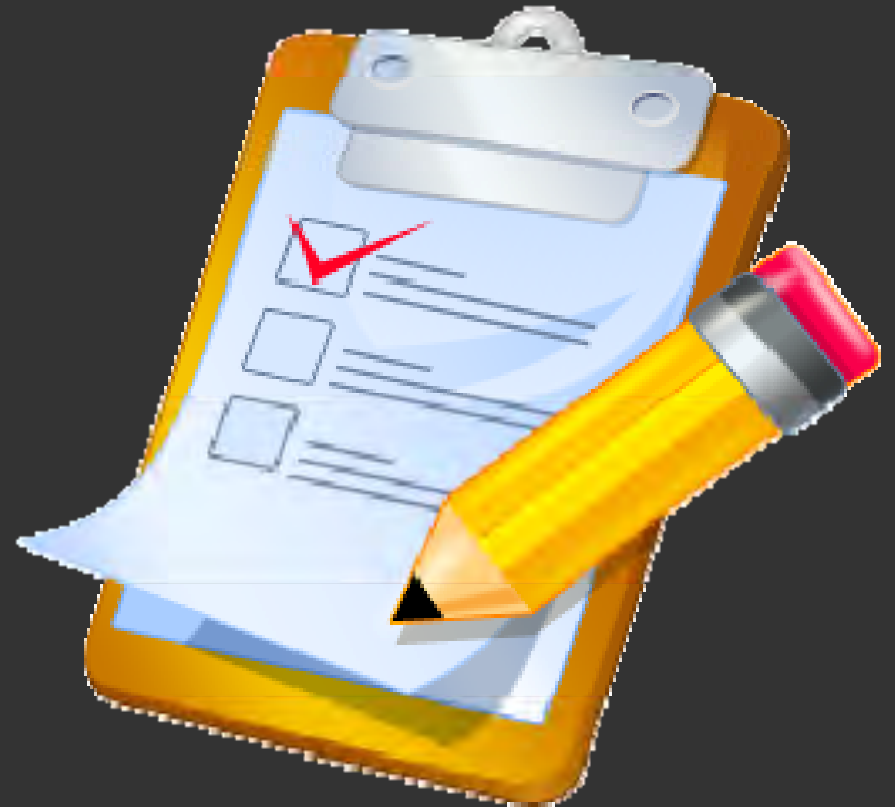
---



# Valuation System Conversion – Key Considerations

---

- ▶ Scope
- ▶ Valuation Methods
- ▶ Input File
- ▶ Known Problems
- ▶ Available Resources
- ▶ Time Frame
- ▶ Reconciliation Requirements



# Valuation System Conversion – Key Considerations

---

## Scope

- ▶ Business included
- ▶ Reserve Items
- ▶ Cost



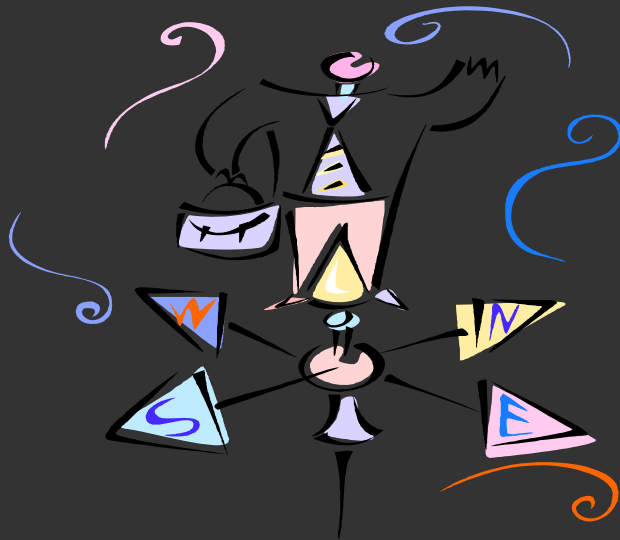
# Valuation System Conversion – Key Considerations

## Methods

- ▶ Current Methods
- ▶ Desired Changes

$$\frac{1}{V} \int z dV = \frac{\pi r_1^2}{V H^2} \int_0^h (z^3 - 2z^2 H + z H^2) dz$$
$$= \frac{\pi r_1^2}{V H^2} \left[ \frac{z^4}{4} - \frac{2z^3 H}{3} + \frac{z^2 H^2}{2} \right]_0^h$$
$$= \frac{\pi r_1^2 H^4}{V H^2} \left[ \frac{1}{4} - \frac{2H}{3h} + \frac{H^2}{2h^2} \right]$$

...ular cone is  $\frac{1}{3} \pi R^2 Z$ , wh  
...hright. The con  
... 30° =

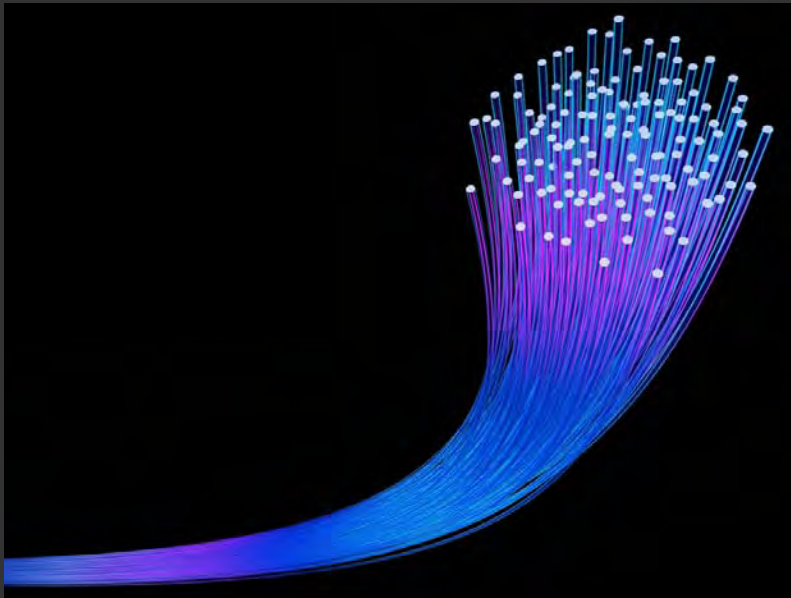


# Valuation System Conversion – Key Considerations

---

## Input

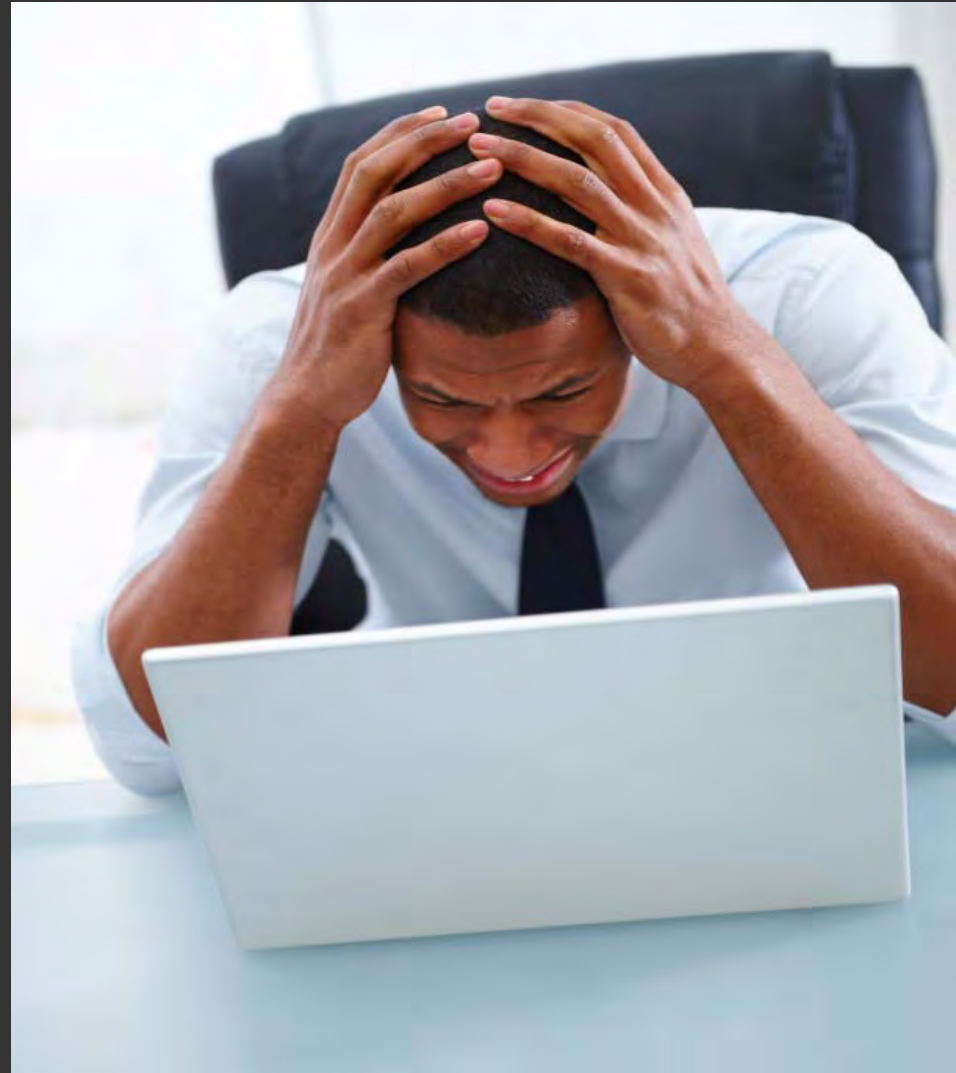
- ▶ Source Systems
- ▶ Data Parameters



# Valuation System Conversion – Key Considerations

---

## Known Problems



# Valuation System Conversion – Key Considerations

---

- ▶ Resources
- ▶ Time Frame





# Valuation System Conversion – Key Considerations

---

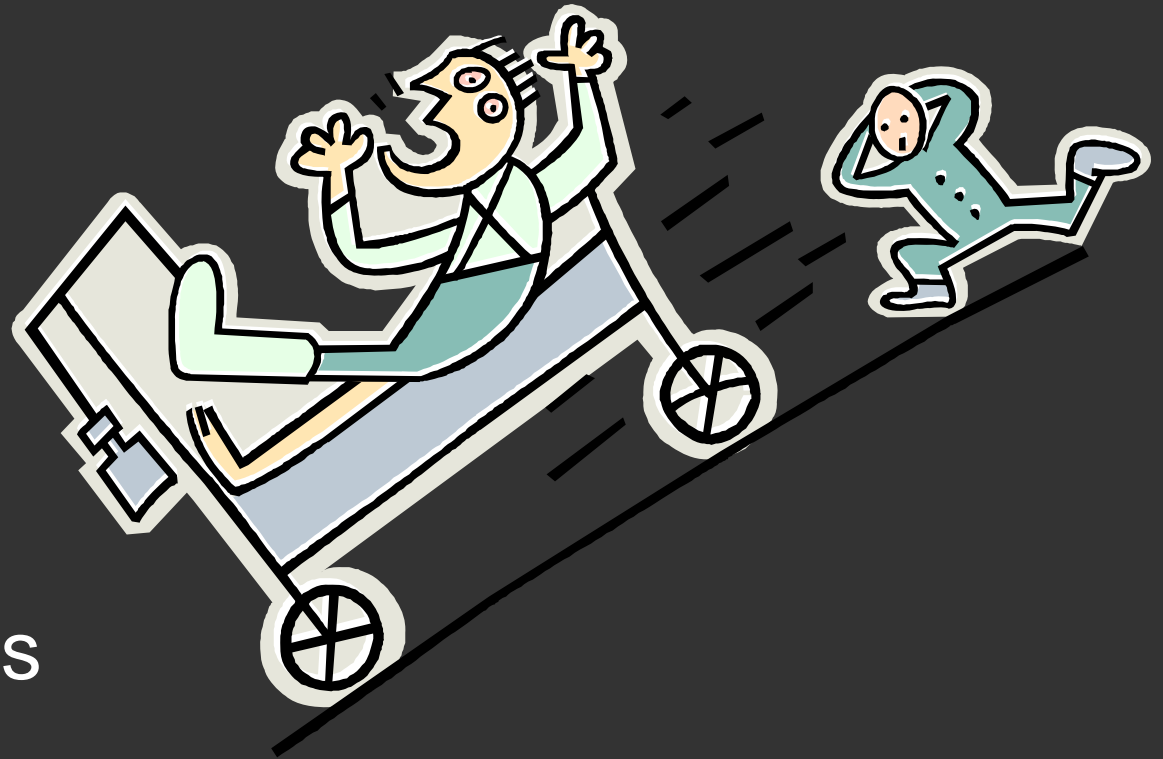
## Reconciliation Issues



# Valuation System Conversion – Potential Problems

---

- ▶ Resource Issues
- ▶ Data
- ▶ Regulatory Issues
- ▶ Cost
- ▶ Unknown Problems

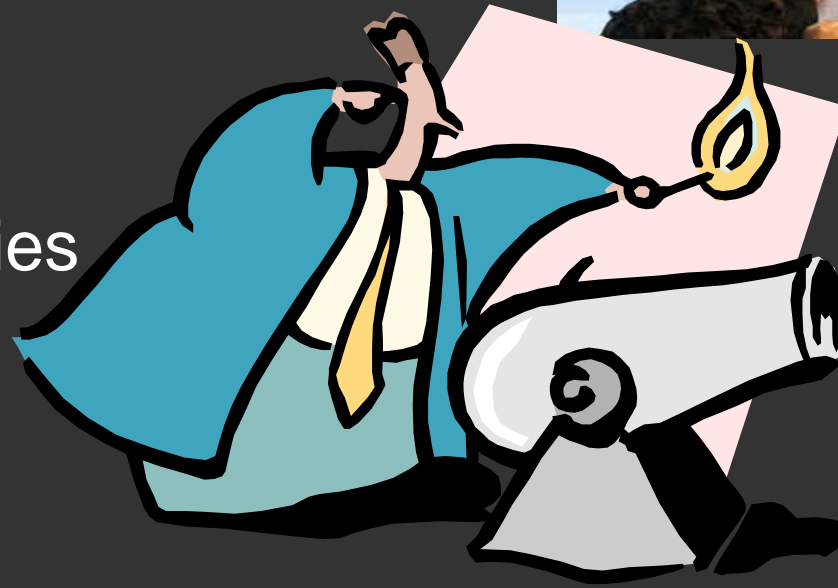


# Valuation System Conversion – Potential Problems

---

## Resource Issues

- ▶ Warm Bodies
- ▶ Expertise
- ▶ Project Enemies



# Valuation System Conversion – Potential Problems

---

- ▶ Data
  - ▶ Access
  - ▶ Reliability



# Valuation System Conversion – Potential Problems

---

Regulatory  
Issues



# Valuation System Conversion – Potential Problems

---

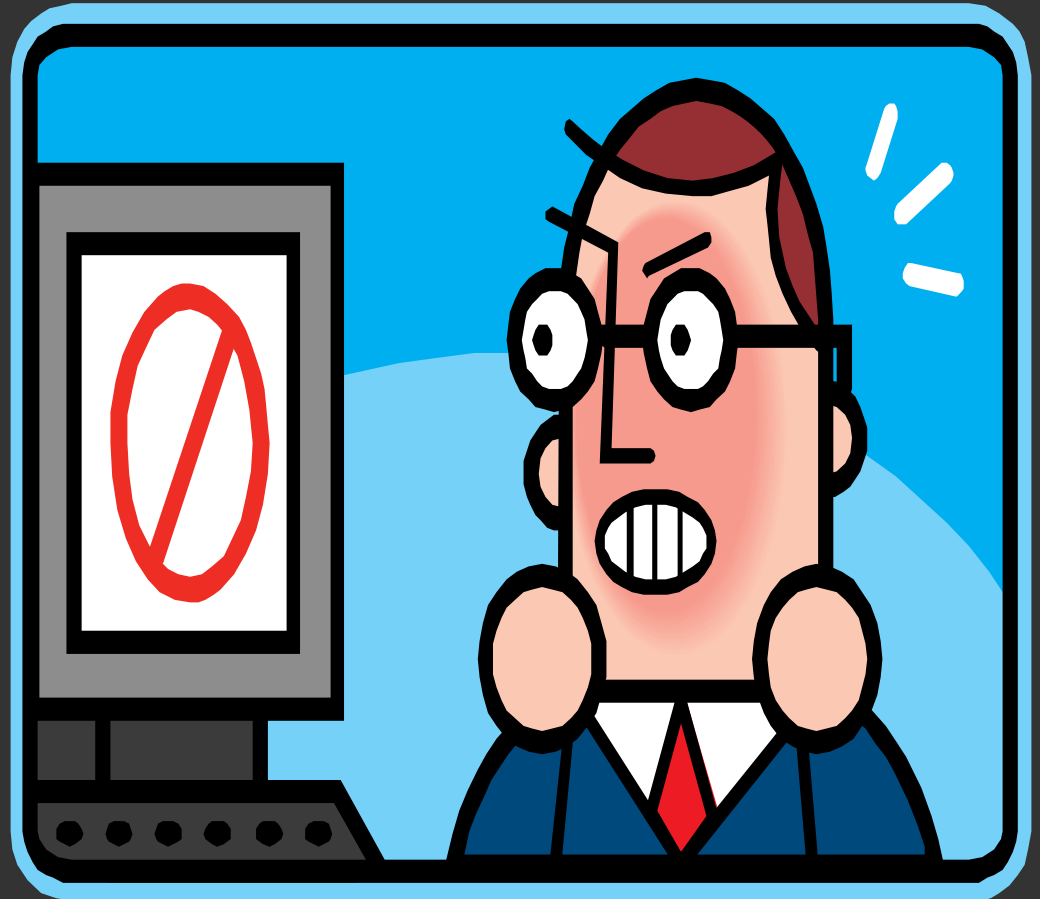
Cost



# Valuation System Conversion – Other Issues

---

- ▶ Hardware Resources
- ▶ Security
- ▶ Controls/”SOX”
- ▶ Run Times



---

# BREATHE

